



Login Module for Online Submission System

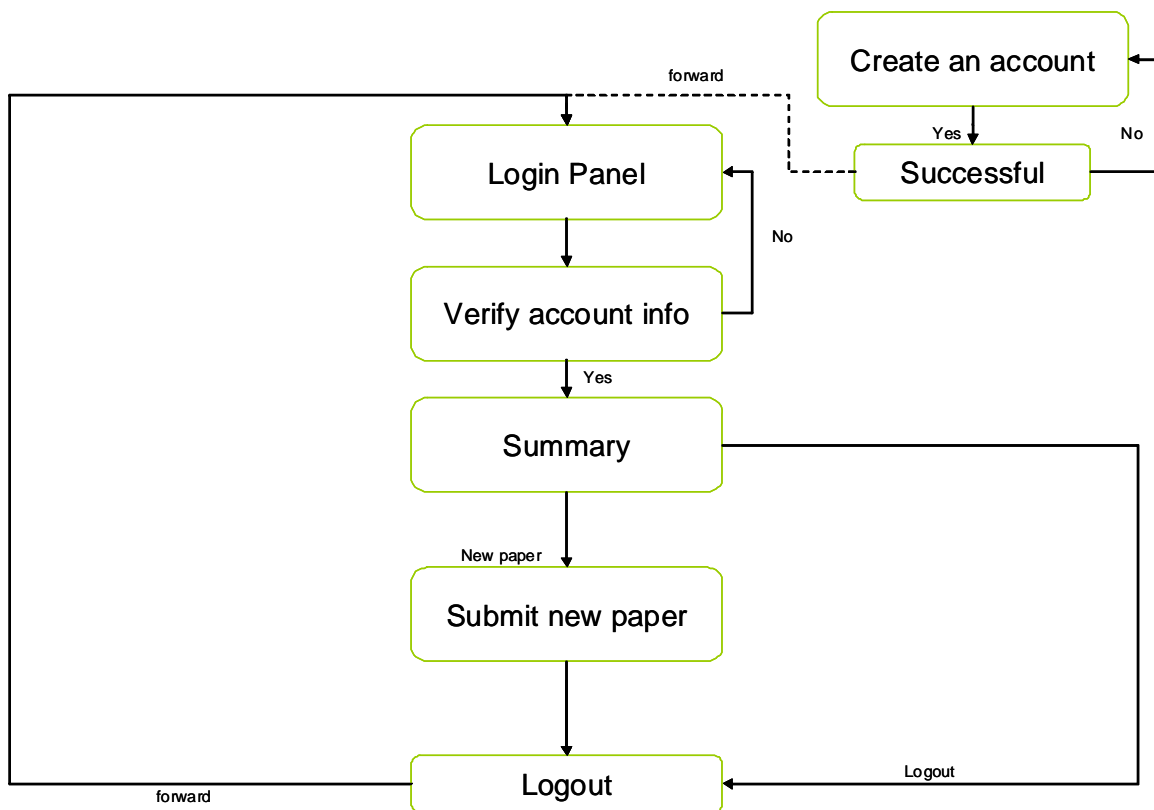
Objective

In this assignment, you will develop login module that extends the prototype developed in assignment I. This module allows users to register and login to the online submission system, update profiles, submit papers, update submission details, view account information. This assignment exercises your ability to handle session variables, and add/retrieve/update database tables.

Overall Outline

Your task for this assignment is to develop a login module that extends the Web-based mobile conference management system. A user creates an account with the online submission system. The user logs in into the system using the email address and the password that he/she chooses during registration. Once a user logs in, the system will display a summary of the papers submitted. Only one paper can be submitted to a particular conference.

The following diagram illustrates the steps necessary for this assignment.



You will need to design a database with the necessary tables that can handle the required functionality for this assignment. You should have at least four tables: Conferences, Tracks, Users, and Papers. Unique identifiers (or primary keys) should link the tables to each other. For example, in the conferences table you should have a primary key (i.e. Conference ID) which links to the Tracks table. A user who is idle for more than 10 minutes should be forwarded to the main login page.

Assignment II (Developing Mobile Web Applications for BlackBerry Devices)

Sample Output

Register new account



Login



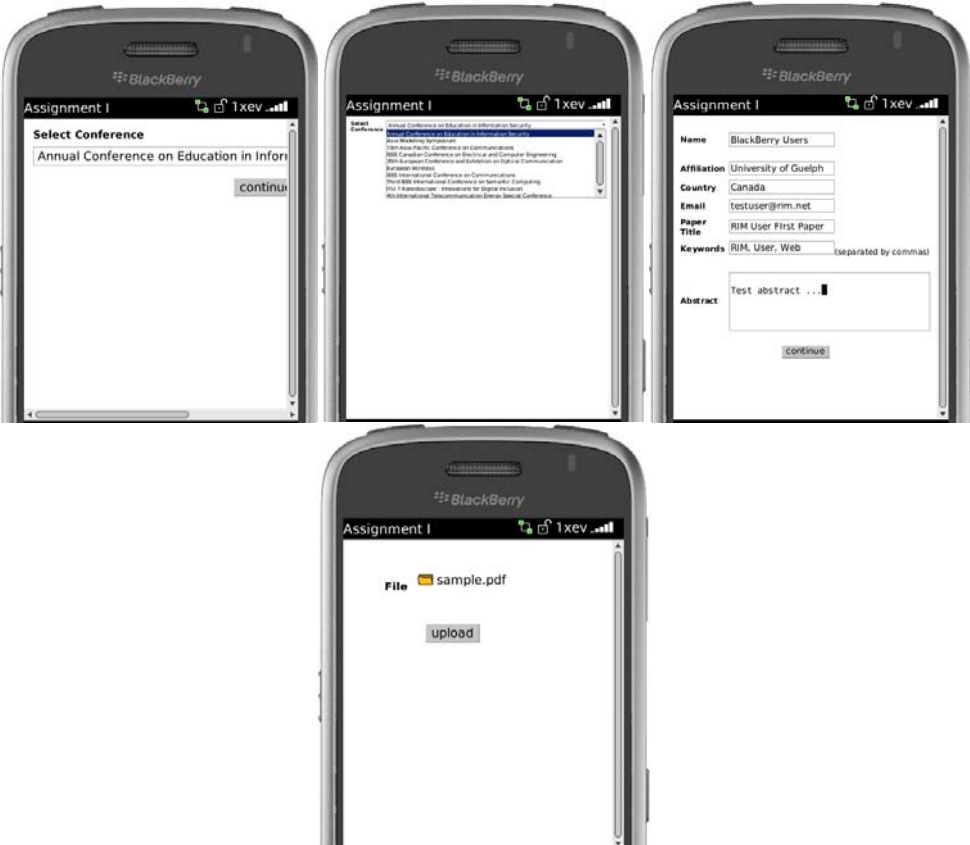
Main



Account Information

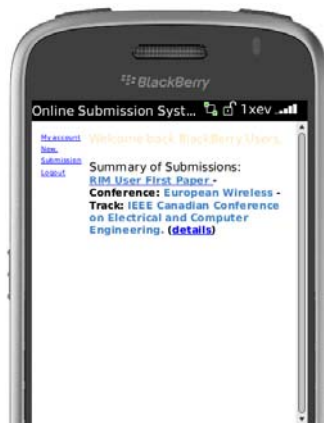


New Submission



Assignment II (Developing Mobile Web Applications for BlackBerry Devices)

Main after submission



Details

